



PAVILION
EMBASSY

KUALA LUMPUR

柏威年大使公馆

MAYFAIR RESIDENCES



15 June 2020

Internal reference only. Private & Confidential and Subject to Change

项目概述

Pavilion Embassy（大使公馆）是由著名发展商Global Oriental 集团开发的项目。该项目坐落于赫赫有名的大使馆区，盛名国际的心脏地带。

这是一项5.75英亩的综合性发展计划。发展项目包括商务办公楼，服务式公寓和贵族豪宅。这永久使用权土地位于吉隆坡黄金地段，距离吉隆坡著名地标双子星仅1.2公里。

项目简介

1	产品	豪华服务式公寓 – Mayfair Residences (Tower D)
2	楼层	16层 Sub-basement : 停车场 Ground Floor : 大堂 托儿所空间/ 管理处 / 祈祷室 Level 1 : 公用公共设施 & Mayfair Residence专用公共设施 Level 2 - 15 : 4单位 / 每层 Level 16 : 1单位/ 每层 (顶层豪宅) Rooftop : 储水箱
3	总户数	57户
4	总停车位	143车位+ 4双车位停车位
5	电梯	4乘客电梯 + 1服务电梯
6	竣工日	April 2023 (预计50个月建设)

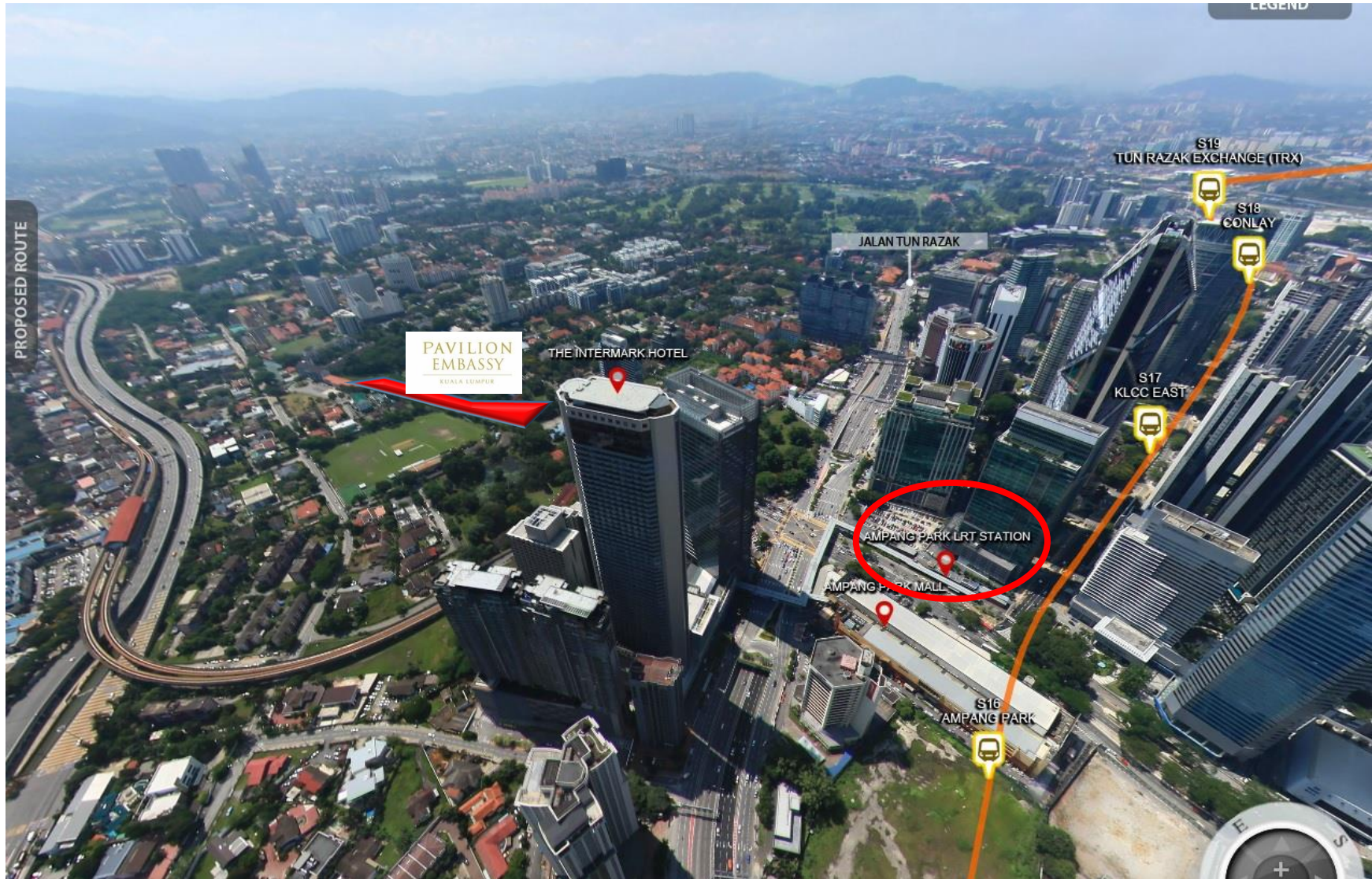
产品组合

户型	户数	建筑面积 (平方尺)	建筑面积 (平方米)
TYPE D	28	1,899 平方尺 (4Br + 1 Utility)	176 平米
TYPE E	28	2,701 平方尺 (Dual key: 4Br + 1 Utility + 1 Studio)	252 平米
Penthouse	1	4,105 平方尺 (4Br + 1 Utility)	381 平米
总户数	57		

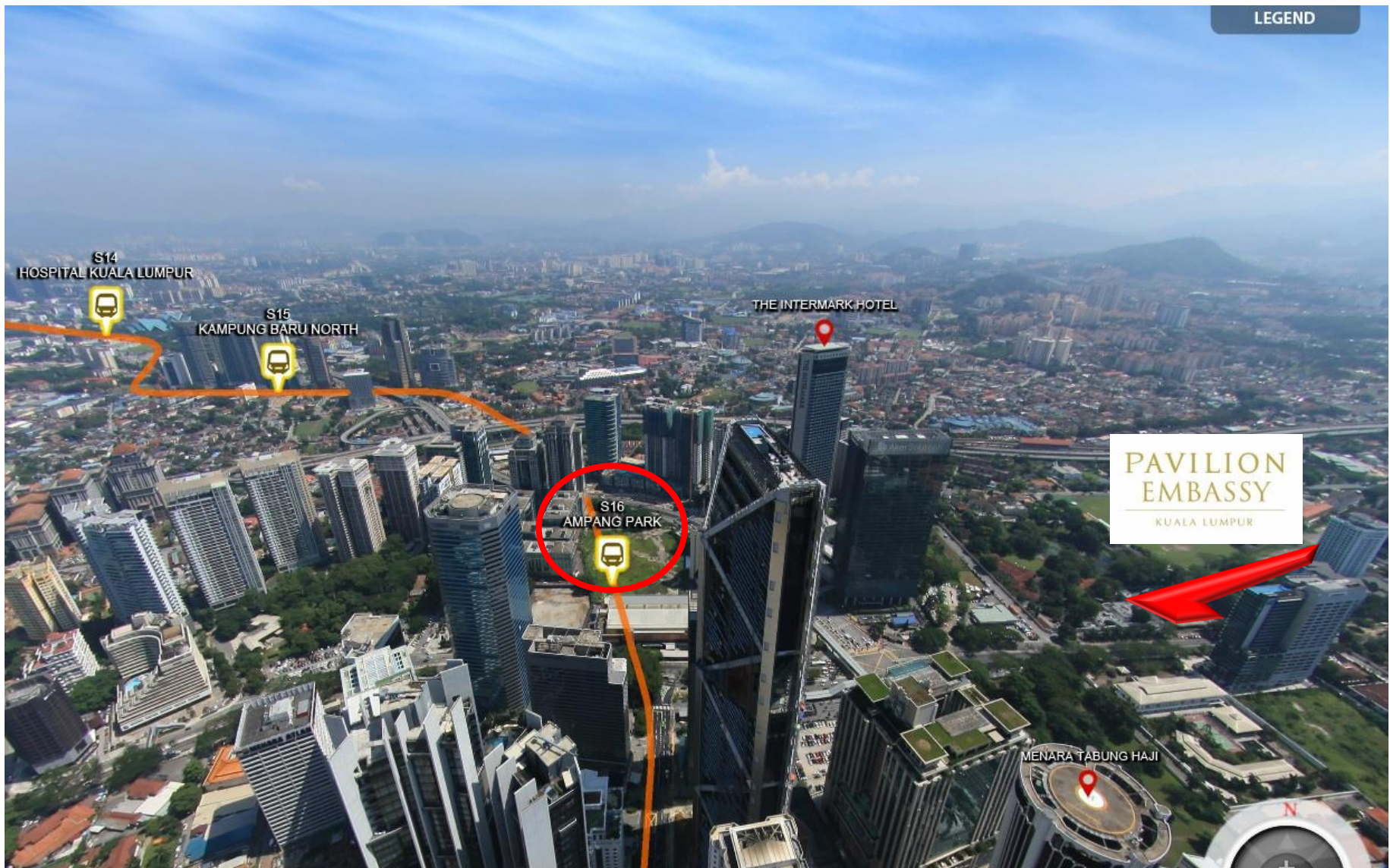
吉隆坡市区新地标



轻快铁 – Ampang Park (距离项目仅500米)



地铁 – Ampang Park (距离项目仅500米) *预计2023年竣工



项目周边配套

• INTERNATIONAL SCHOOLS 国际学校

- Sayfol Int. School 800 m
- Kuala Lumpur Int. School 4.4 km
- Fairview Int. School 7.5 km

• MEDICAL CENTRES 医疗中心

- HSC Medical Centre 50 m
- Gleneagles Hospital 1.9 km
- Prince Court Medical Centre 2.6 km
- Ampang Puteri Medical Centre 3.4 km

• SHOPPING VENUES 购物地点

- Jaya Grocer, Intermark 400 m, approx. 5 min's walk
- Hock Choon Supermarket 700 m
- Great Eastern Mall 1.5 km
- Avenue K 1.2 km
- Pavilion Kuala Lumpur 3.5 km

• EMBASSIES / HIGH COMMISSION 大使馆

- France Embassy 50 m
- British High Commission 100 m
- Thailand Embassy 400 m
- Russia Embassy 400 m
- China Embassy 500 m
- Germany Embassy 750 m
- Spanish Embassy 750 m
- Singapore High Commission 750 m
- Switzerland Embassy 900 m
- US Embassy 900 m

第二期平面图

Mayfair Residences

Oxford Residences

(Tower D)

(Tower E)



Mayfair Residences - 底层公用公共施设



Ground Floor

1. Guardhouse
2. Mayfair Residences Grand Lobby
3. Children's Playground
4. Water Feature
5. Management Office
6. Nursery
7. Surau
8. Visitor Parking



Mayfair Residences - 底层公用公共施设



Ground Floor

1. Drop off lobby
2. Mayfair Residences Grand Lobby
3. Children's Playground
4. Water Feature



Mayfair Residences – 一楼公共设施



Level 1 Podium Facilities

Limited Common Facilities

1. Open Deck*
2. Function Room
3. Lifestyle Kitchen*
4. Premier Lounge*
5. Tea Room*
6. Games Room*
7. Outdoor BBQ Deck*

**For Mayfair residents only*

Common facilities

8. Jacuzzi
9. 50m Infinity Edge Lap Pool
10. Kids' Pool
11. Sundeck
12. Gymnasium
13. Yoga / Dance Room
14. Changing Room
15. Sauna / Steam Room



Mayfair Residences – 一楼公共施设 *(仅限Mayfair住户使用)



Level 1 Podium Facilities (LIMITED COMMON FACILITIES)

1. Open Deck*
2. Function Room
3. Lifestyle Kitchen
4. Premier Lounge*
5. Tea Room*
6. Games Room*
7. Outdoor BBQ Deck*

**For Mayfair residents only*



公用公共施設 – 50m Infinity Edge Lap Pool



Mayfair Residences – Tea Room *(仅限Mayfair住户使用)



Mayfair Residences – Premier Lounge *(仅限Mayfair住户使用)



Mayfair Residences – Function Room *(仅限Mayfair住户使用)



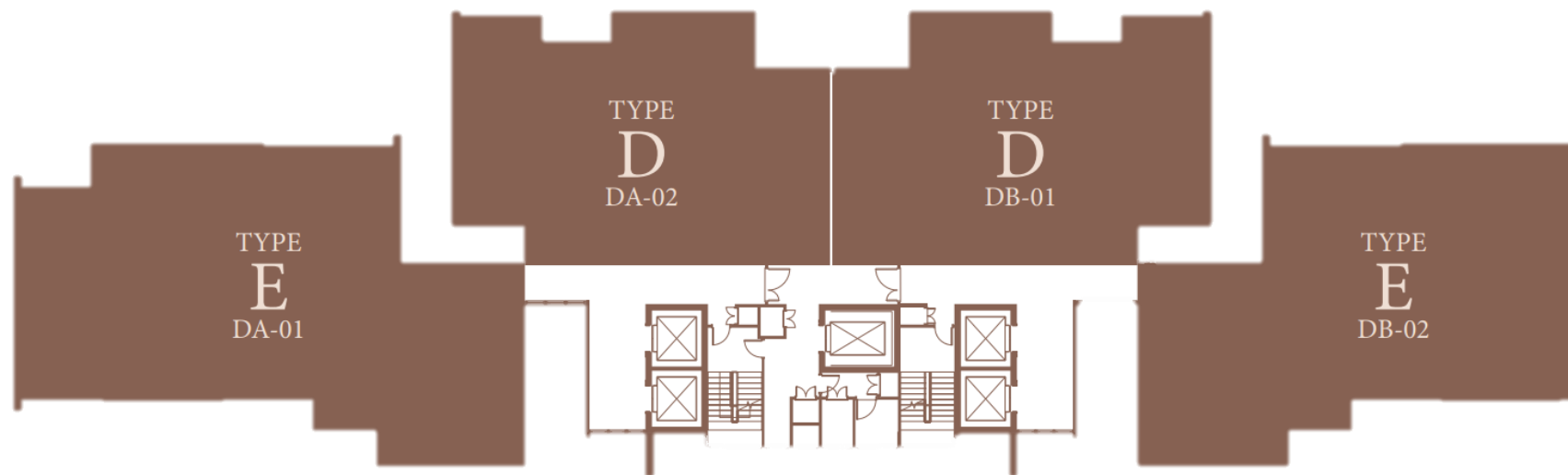
PAVILION EMBASSY

KUALA LUMPUR

Mayfair Residences

楼层平面图

2 – 15楼楼层平面图



Level 2 - Level 15

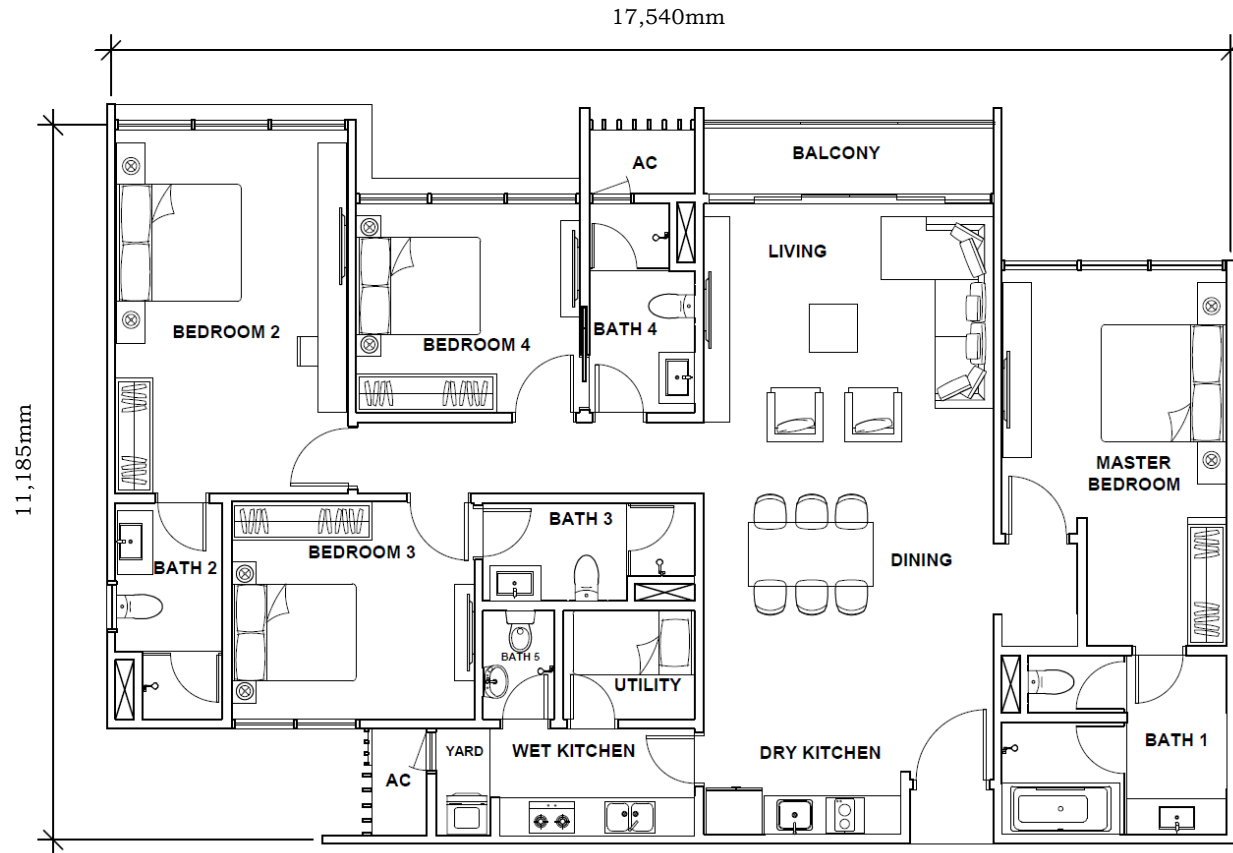
Type D – 1,899平方尺 / 176平米

Type E – 2,701平方尺 / 252平米



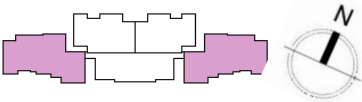
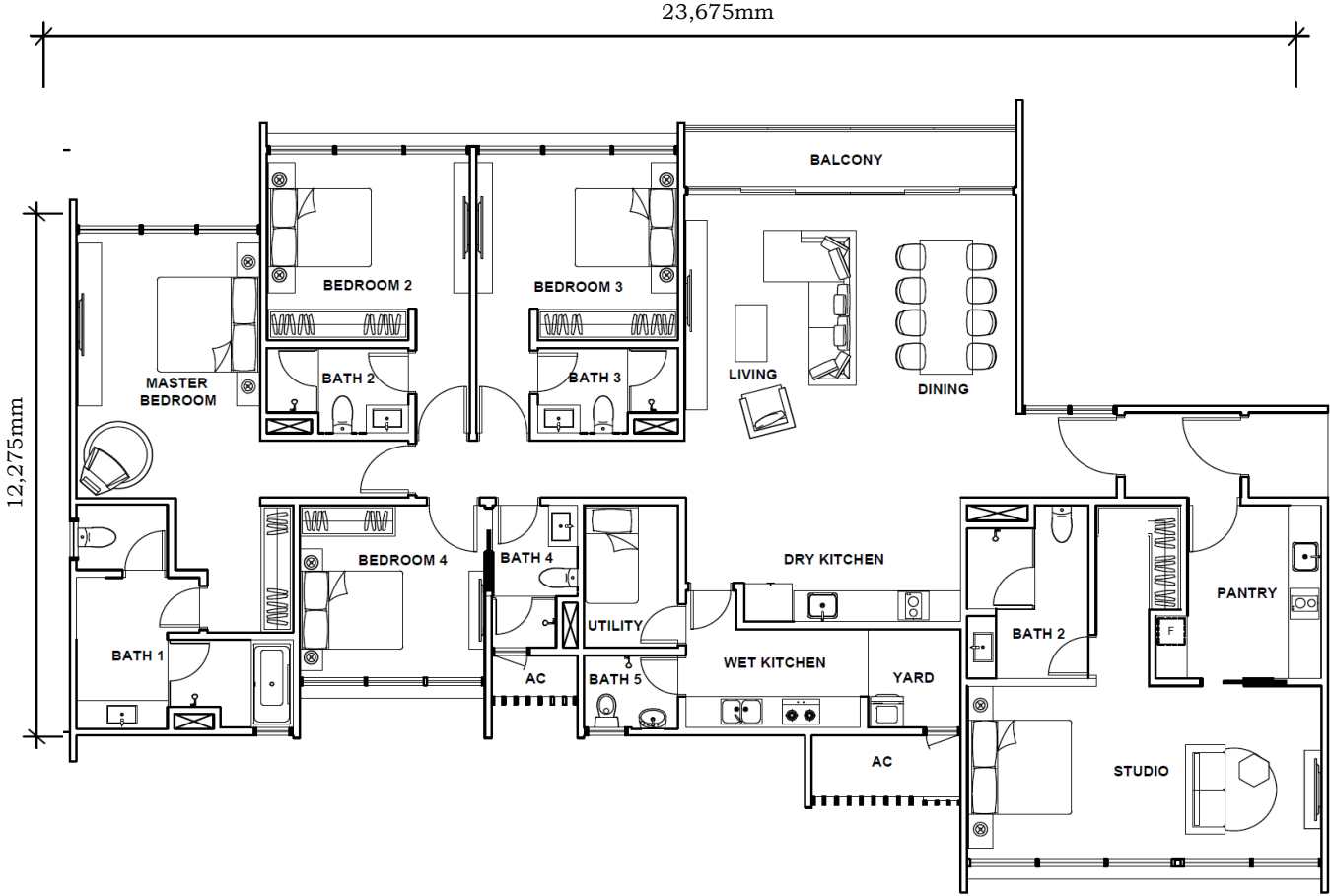
Type D – 1,899 平方尺/ 176 平米

4房 + 杂物间

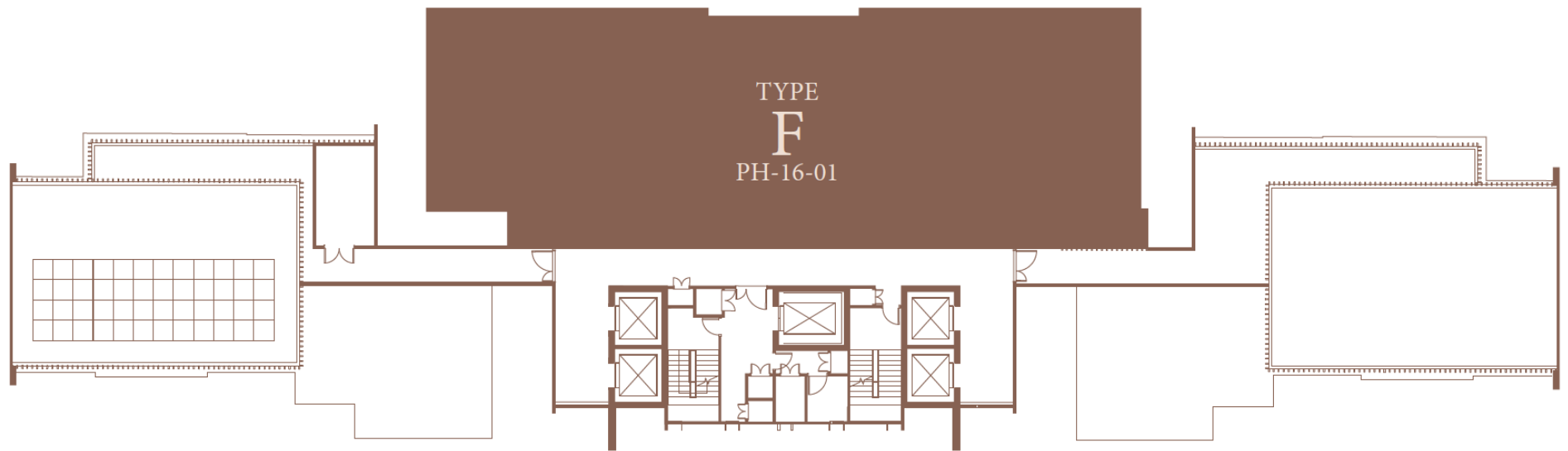


Type E – 2,701 平方尺 / 252 平米

4房 + 杂物间 + 套房 (双钥匙)



16楼楼层平面图

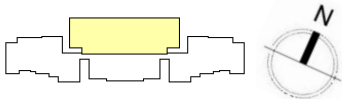
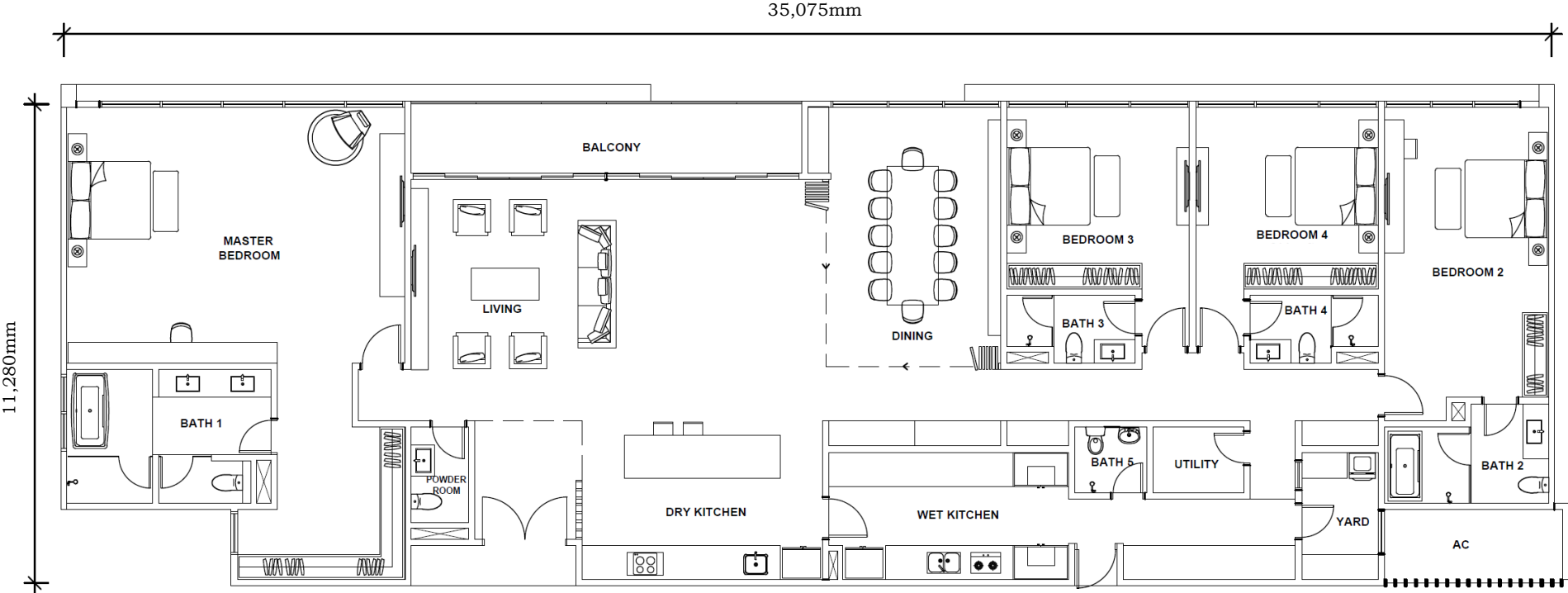


Level 16



Type F – 4,105 平方尺 / 381 平米

4房 + 杂物间



Mayfair Residences 楼层图



① 楼层17：储水箱楼层

② 楼层16：顶楼豪宅

③ 楼层 2 - 16：标准楼层

④ 楼层 1：公共设施

⑤ 底层：大堂



材料与规格

Structure 结构	: Reinforced concrete framework 钢筋混凝土构架	
Wall 墙	: Masonry wall / Reinforced concrete wall 钢筋混凝土墙	
Roofing 屋顶	: Reinforced concrete structure 钢筋混凝土屋顶	
Ceiling 天花板	: Plaster board ceiling / skim coat & paint 纤维石膏 / 磨化面层 & 油漆	
Window 窗口	: Aluminium frame with window 铝框架玻璃窗	
Doors 门	: Main entrance 大门 Others area 其他门	: Timber fire rated door 防火门 : Timber door 木门 : Glass Door 玻璃门 : Sliding door 拉门
Ironmongery 门锁	: Quality lockset 品质门锁	
Wall Finishes 墙壁饰面	: Bath 1 主浴室 Common bathrooms/ Wet Kitchen 浴室/ 湿厨房 Others area 其他地方	: Compressed marble 人造石 : Porcelain tiles 瓷砖 : Plaster and paint 石膏和油漆
Floor Finishes 地板表面	: Living/Dining/Dry Kitchen/Bath 1 客厅/ 饭厅/ 干厨房/ 主浴室 Master bedroom/Studio/ Bedrooms/ Study 主卧室/ 套房/ 卧室/ 书房 Bathrooms/Wet Kitchen 浴室/ 湿厨房 Balcony/Yard 阳台/ 晒衣间	: Compressed marble 人造石 : Solid timber strips 实木条组成 : Porcelain tiles 瓷砖 : Homogeneous tiles 瓷砖
Sanitary & Plumbing Fittings 卫生器皿和配件	: Approved quality sanitary wares & fittings 符合规格的卫生器皿和配件	

联系我们



City Crest Realtors

(A Registered Estate Agent E (3) 1488)

Tel : +603-2181 8089

Email : thecitycrest@gmail.com

Website : www.citycrest.com.my